



County Profile Contact (919) 715-6374

Commerce Economic Development Contact (919) 733-4977

Demographics

Population & Growth

	Population	Annual Growth Rate
2014 Total Population	1,704,341	1.5%
2009 Total Population	1,621,717	1.5%
2000 Total Population	1,464,979	
July 2009 Certified Population Estimate	1,626,133	
July 2009 Certified Population Growth	161,465	
July 2009 Certified Population Net Migration	100,630	

Urban/Rural Representation

		Urban/Rural Percent
2000 Total Population: Urban - inside Urbanized Area	792,058	54.1%
2000 Total Population: Urban - inside Urbanized Clusters	129,150	8.8%
2000 Total Population: Rural - Farm	14,279	1.0%
2000 Total Population: Rural - Nonfarm	529,492	36.1%

Estimated Population by Age

		Pop by Age, % Est.
2009 Total Pop 0-19	423,224	26.1%
2009 Total Pop 20-29	203,556	12.6%
2009 Total Pop 30-39	216,015	13.3%
2009 Total Pop 40-49	245,896	15.2%
2009 Total Pop 50-59	224,948	13.9%
2009 Total Pop 60+	308,078	19.0%

Working Commuters, 2000 Census

Workers, Travel Time

Avg Travel Time, Not at Home	25
Workers Not Working at Home	698,409
Travel Time to Work: < 5 minutes	19,201
Travel Time to Work: 5-9 minutes	71,946
Travel Time to Work: 10-14 minutes	118,611
Travel Time to Work: 15-19 minutes	136,439
Travel Time to Work: 20-24 minutes	118,812
Travel Time to Work: 25-29 minutes	43,486
Travel Time to Work: 30-34 minutes	87,303
Travel Time to Work: 35-39 minutes	16,701
Travel Time to Work: 40-44 minutes	16,887
Travel Time to Work: 45-59 minutes	36,567
Travel Time to Work: 60-89 minutes	18,253
Travel Time to Work: 90+ minutes	14,203

Workers, By Transportation

Worker Mode, Base	715,484
Work at Home	17,075
Drove Car/Truck/Van Alone	578,489
Carpooled Car/Truck/Van	97,139
Bus/Trolley Bus	4,291
Streetcar/Trolley Car	113
Subway/Elevated	184
Railroad	159
Ferryboat	23
Taxicab	731
Motorcycle	531
Bicycle	739
Walked	739
Other Means	5,142

Travel to Work

	Commuters	Percent by Residence
Worked in State/County of Residence	516,154	72.1%
Worked in State/Outside County of Residence	190,250	26.6%
Worked Outside State of Residence	9,080	1.3%

Education

		Pop Age 25+, %
2009-10 Kindergarten-12th Enrollment	249,366	
2010 Number of Graduates taking SAT	8,115	
2010 Percent of Graduates taking SAT	57.1%	
2008-09 Higher Education Completions	18,208	
2008-09 Higher Education Total Enrollment	122,957	
2009 Proj Education Attainment - At Least High School Graduate	884,020	80.7%
2009 Proj Education Attainment - At Least Bachelor's Degree	252,747	23.1%

Housing

		% Growth / % of Total
2014 Total Housing	761,056	5.4%
2009 Total Housing	722,342	
2014 Average Value of Owner Occupied Housing	\$150,343	5.3%
2009 Average Value of Owner Occupied Housing	\$142,813	18.7%
2000 Average Value of Owner Occupied Housing	\$120,351	
2009 Owner Occupied Housing	451,309	
2009 Renter Occupied Housing	199,790	
2009 Total Households	651,099	

Income

		% Growth / % of Total
2014 Average Family Income	\$75,981	5.2%
2009 Average Family Income	\$72,246	21.0%
2000 Average Family Income	\$59,731	
2014 Average Household Income	\$65,320	3.4%
2009 Average Household Income	\$63,153	22.5%
2000 Average Household Income	\$51,533	
2009 Average Disposable Income	\$50,063	
2014 Per Capita Income	\$26,675	0.0
2009 Per Capita Income	\$25,686	23.6%
2000 Per Capita Income	\$20,778	
2000 Total Pop with Income Below Poverty Level	154,575	
2000 Percent of Pop with Income Below Poverty		10.8%

Employment / Unemployment

	Year to Date	2009 Annual
2010Q3 Employment	716,015	711,735
2010Q3 Unemployment	77,485	89,524
2010Q3 Unemployment Rate	9.8%	11.2%
2010Q3 Announced Job Creation	2,433	2,631
2010Q3 Total Announced Investments (\$mil)	\$160.60	\$338.89
Oct2010 Lost Jobs, Closings & Layoffs	2,960	10,863
Oct2010 Establishment Events, Closings & Layoffs	208	248

Employment / Wages by Industry

	2010 1st Qtr Employment	2009 Annual Employment	2010 1st Qtr Avg Weekly Wage	2009 Avg Weekly Wage
Total All Industries	651,360	668,158	\$719	\$717
Total Government	71,848	71,122	\$721	\$755
Total Private Industry	549,449	566,387	\$716	\$709
Agriculture Forestry Fishing & Hunting	494	489	\$506	\$535
Mining	288	303	\$718	\$779
Utilities	983	1,035	\$1,369	\$1,171
Construction	27,264	30,804	\$691	\$738
Manufacturing	96,984	101,980	\$903	\$865
Wholesale Trade	23,777	23,906	\$902	\$893
Retail Trade	72,617	74,854	\$448	\$466
Transportation and Warehousing	28,848	29,472	\$752	\$784

Information	8,574	8,780	\$974	\$922
Finance and Insurance	28,879	29,594	\$1,228	\$1,080
Real Estate and Rental and Leasing	6,713	6,999	\$686	\$689
Professional and Technical Services	21,921	20,817	\$985	\$1,063
Management of Companies and Enterprises	13,865	13,934	\$1,650	\$1,312
Administrative and Waste Services	41,352	41,725	\$437	\$450
Educational Services	53,858	51,277	\$769	\$784
Health Care and Social Assistance	91,432	92,210	\$723	\$774
Arts, Entertainment and Recreation	6,652	7,621	\$397	\$373
Accommodation and Food Services	54,022	56,159	\$252	\$260
Other Services Ex. Public Admin	15,756	16,468	\$469	\$477
Public Administration	26,605	28,144	\$717	\$768
Unclassified	413	938	\$816	\$780

Commercial/Retail/Industrial

2010 Available Industrial Buildings	445
2010Q1 Establishments: Total Private Industry	37,614
2010Q1 Establishments: Manufacturing	2,304

Local Retail Business - Supply

2009 Total Retail Sales (With Food/Drink) (\$mil)	\$17,877.8
2009 Total Retail Businesses (With Food/Drink)	13,927
2009 Avg Sales/Business Total (with Food/Drink)	\$1,283,681

Quality of Life

Taxes

FY2010-11 Maximum Property Tax Rate per \$100 Value	\$0.7400
FY2010-11 Minimum Property Tax Rate per \$100 Value	\$0.5200
FY2009-10 Total Annual Taxable Retail Sales (\$mil)	\$13,542

Childcare

Sep2010 Licensed Child Care Facilities	1,345
Sep2010 Licensed Child Care Enrollment	41,694

Weather

Annual Rainfall	46
Annual Snowfall	9
Average Annual Temperature	56
Average Annual High Temperature	69
Average Annual Low Temperature	46

Healthcare Providers

2009 Number of Physicians	3,376
2009 Physicians per 10,000 population	21
2009 RNs per 10,000 population	96
2009 Dentists per 10,000 population	4
2009 Pharmacists per 10,000 population	9

Sources:

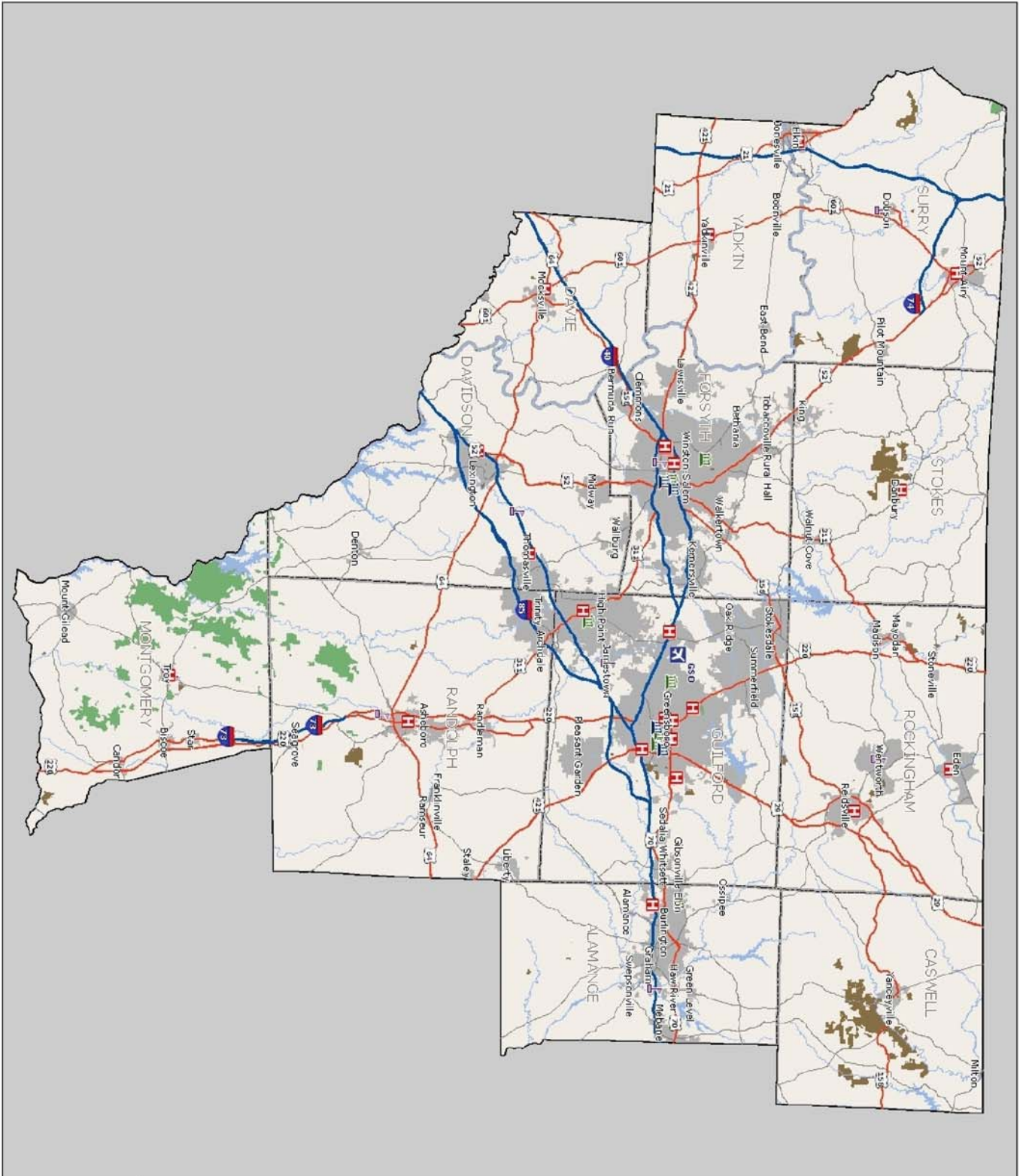
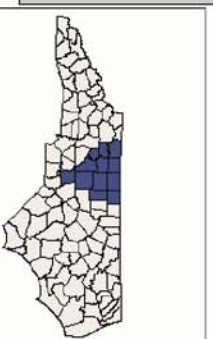
ESRI for demographics, working population, educational attainment, housing, income, crime, weather, and retail data. <http://www.esri.com>
 NC Dept. of Education and various state education departments for SAT data by county system. <http://www.ncpublicschools.org>
 US Dept. of Education, National Center for Education Statistics for higher education data. <http://nces.ed.gov/ipeds/>
 NC Commerce for announced new jobs and investment, NC tiers, and number of industrial buildings. <http://www.nccommerce.com/en>
 NC Employment Security Commission for lost jobs and affected establishments data. <http://www.ncesc.com>
 NC Dept. of Health & Human Services for childcare data. <http://www.ncdhhs.gov/>
 UNC Sheps Center for healthcare provider statistics. <http://www.shepscenter.unc.edu/>
 US Bureau of Labor Statistics for employment and unemployment, wages and establishments by industry. <http://www.bls.gov>

Notes:

Data are the latest available at the date the profile was prepared. SAT scores use the new scoring system including a writing test for a perfect score of 2400 and represent county systems. ESRI 2009/2014 data are projections. Some data may be available only for North Carolina. For further details or questions, please check the Data Sources Guide at https://edis.commerce.state.nc.us/docs/bibliography/Data_Sources_Guide.pdf.

Piedmont Triad Region

Legend	
	Ports
	Hospitals
	International
	Regional
	Public University
	Private University
	Community College
	Interstate
	US Highway
	NC Highway
	ED Regions
	County Boundary
	Water Bodies
	Military Base
	State Owned Land
	Federally Owned Land
	Municipality



Prepared by North Carolina Department of Commerce,
Division of Policy, Research & Strategic Planning, July 2008